



SolidWorks CPD 2015 Phase 2



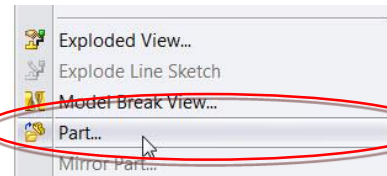
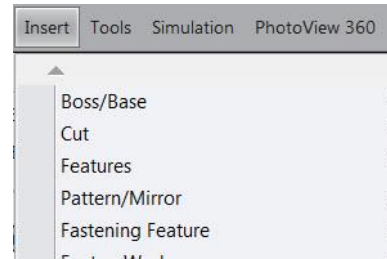
Design & Communication Graphics
Technology
Engineering
Construction Studies

Adding the threads to the Pen Lid

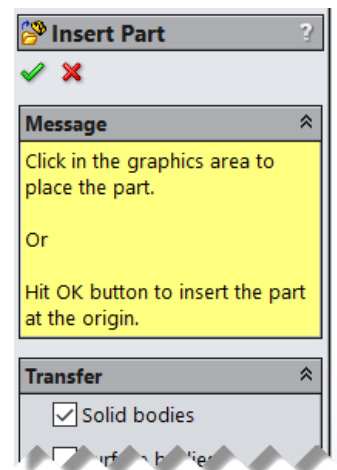
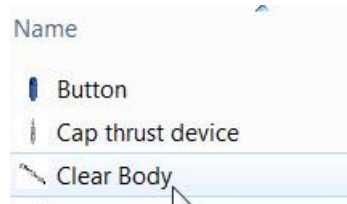
Under **Insert** select **Part**.

Note:

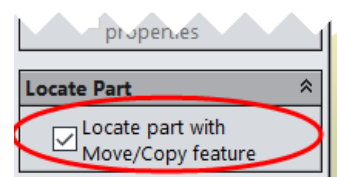
This feature allows you to insert parts to edit another part within a part file



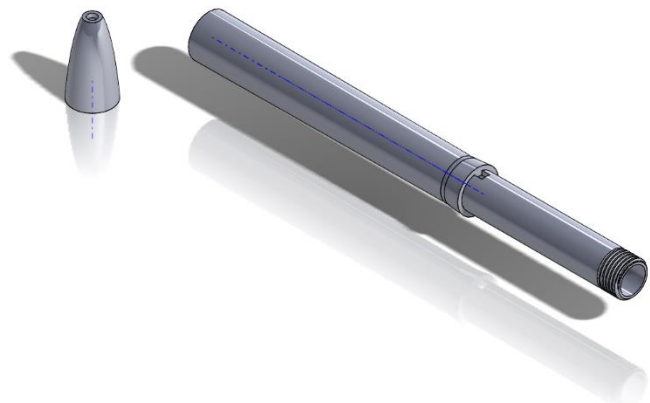
In the Pen folder select the **Clear Body** part.



Make sure the “**Locate Part with Move/Copy feature**” button is selected on the **Insert Part** window

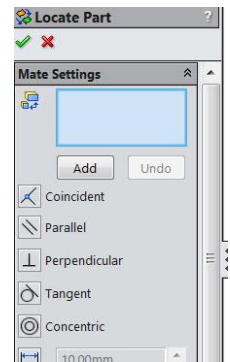
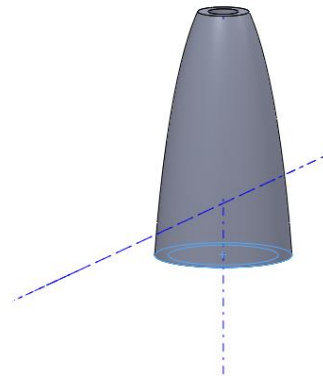
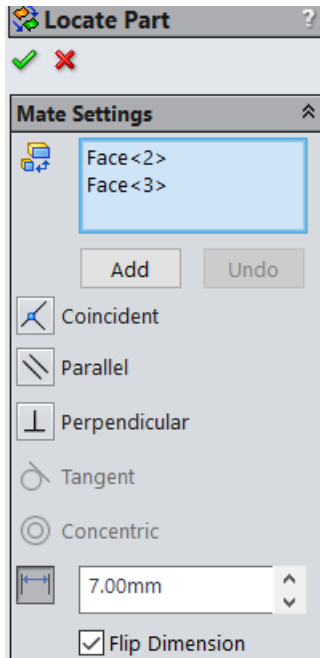


Position the **Clear Body** near but not on top of the existing part.

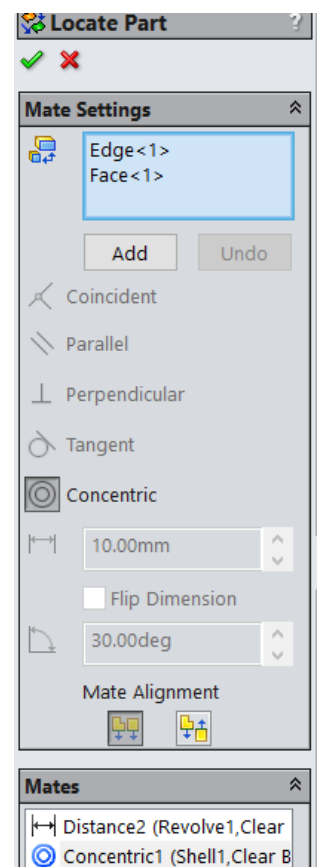
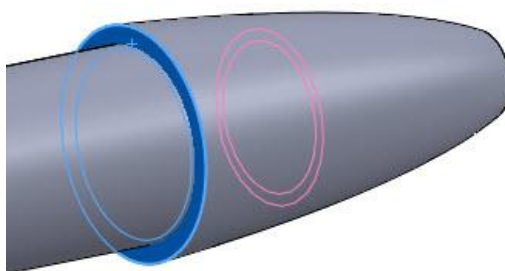
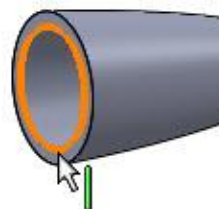


On the left hand side the **Mate Settings** window appears.

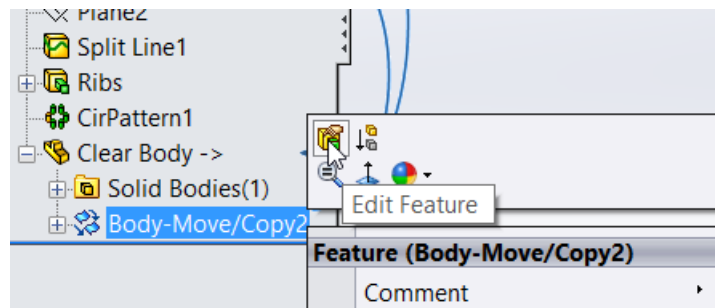
Select the circular face of the **Clear Body** part and the end of the **Pen Lid** part as shown and apply a **Distance** mate of **7mm**. Flip dimension if necessary



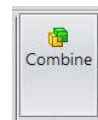
Select the circle **edge** on the face of the **Pen Lid** part and the cylindrical **face** on the **Clear Body** part as shown and select the **Add** button.



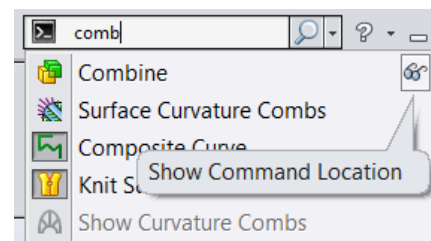
The Move/Copy feature can also be selected for editing after inserting a part in to another part file. Open the Clear Body feature, select the Body-Move feature and edit feature. This will allow you to position the body correctly.



When the Clear Body part is in the correct position select the **Combine** command.

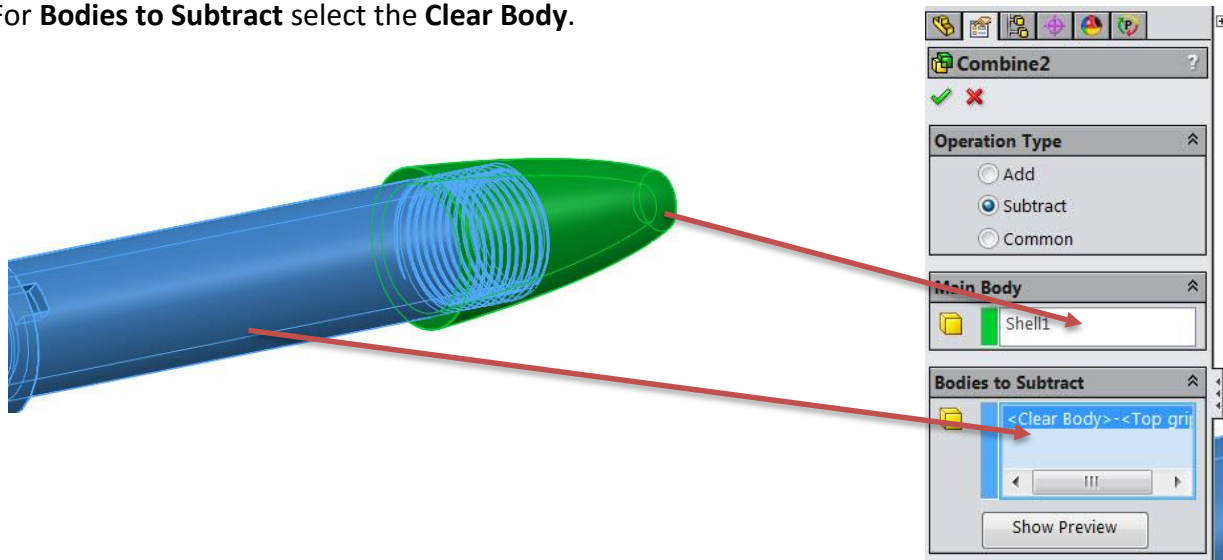


Use the search command to find the feature



For **Main Body** select the **Pen Lid**.

For **Bodies to Subtract** select the **Clear Body**.



Accept.

The threads are now applied to the Screw Lid part.

